

Dr Jerzy Gawor Rescue Kit

Open In Case of VETERINARY DENTAL Emergency



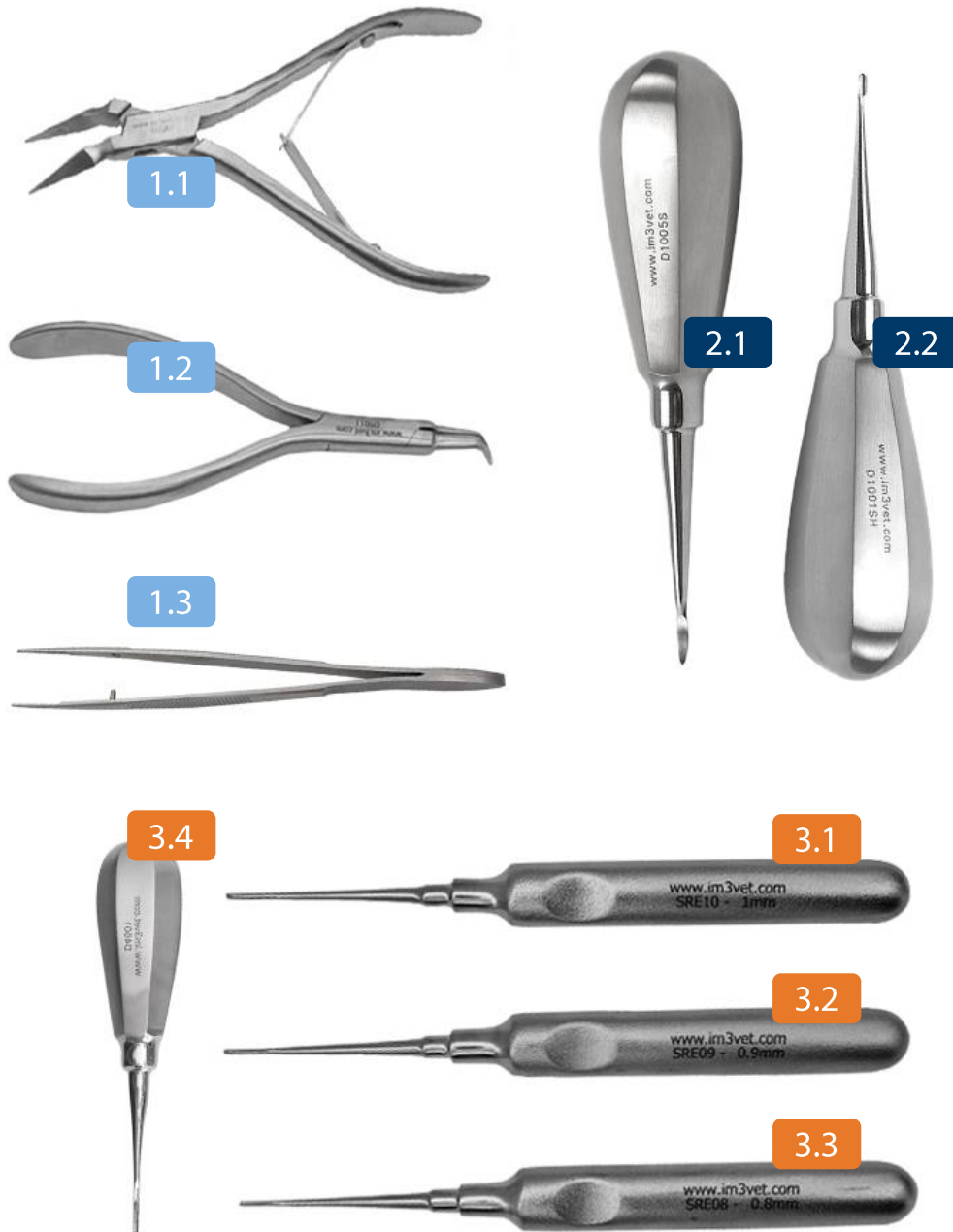
English

French

Spanish

German

Italian



Legend

Grasping instruments

- 1.1 D3060 - Fine Root tip pickup, miniforceps
- 1.2 D5011 - Fragment extraction Stieglitz curved forceps
- 1.3 D5022 - Pincet Manual forceps

Elevating instruments

- 2.1 D1005S - tooth root pick elevator
- 2.2 D1001SH - Winged elevator 1mm

Luxating elevators

- 3.1 SRE10 - Straight root elevator – 1.0 mm
- 3.2 SRE09 - Straight root elevator – 0.9 mm
- 3.3 SRE08 - Straight root elevator – 0.8 mm
- 3.4 D4501 - Luxator 1mm

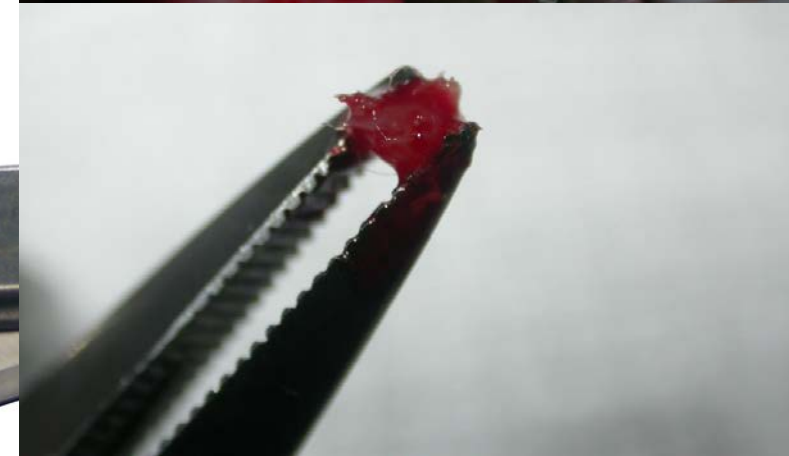
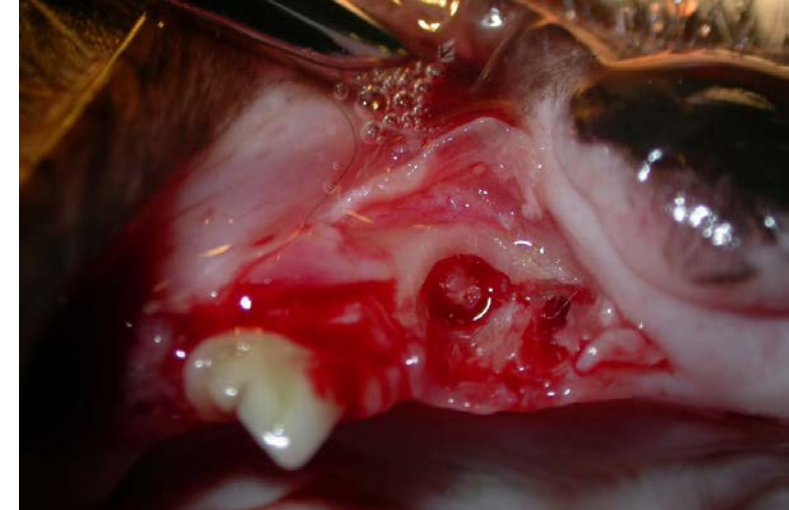
1.1 Grasping instruments

Root tip extraction curved forceps (Stieglitz forceps) to catch and retrieve small tooth or bone fragment with firm grasp without additional elevation.

Medium size is sufficient;

The beaks are sensitive and require control and cautious use;

Falling off usually damage them;



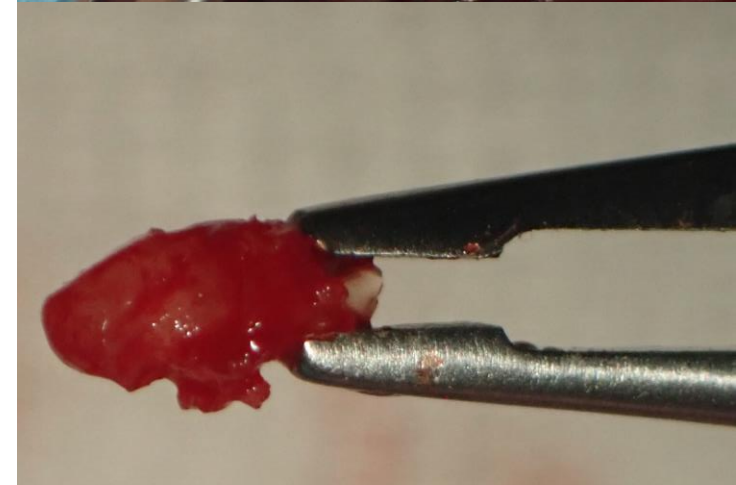
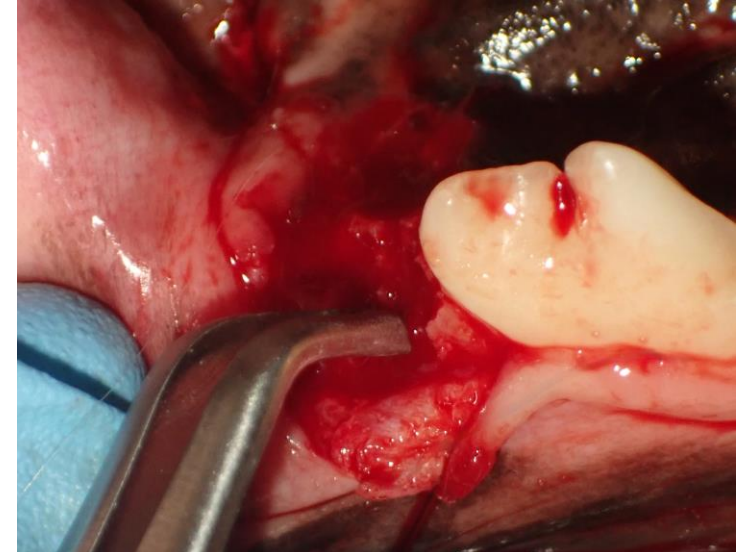
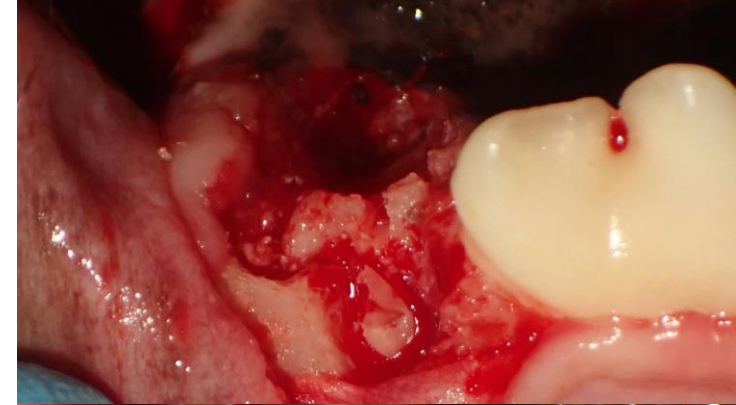
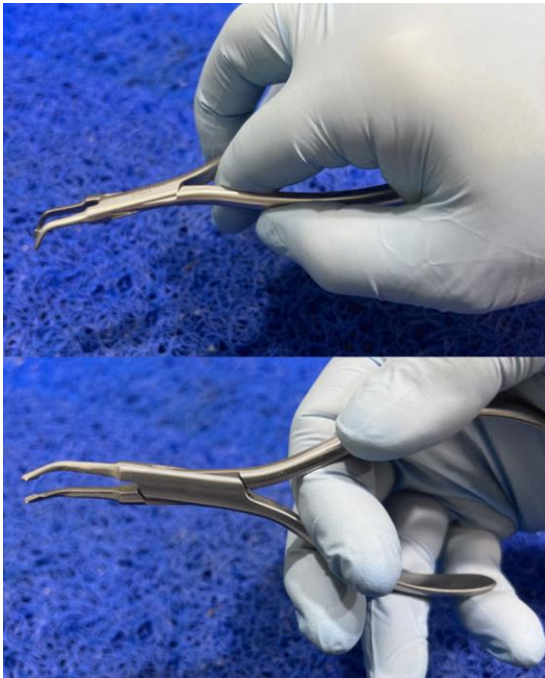
1.2 Grasping instruments

Fine Root tip pickup, miniforceps to catch, gently elevate with manipulation and retrieve small tooth or bone fragment with delicate grasp.

Medium size is sufficient;

The beaks are delicate but resistant and require control and cautious use;

Use in oversized objects can damage them;



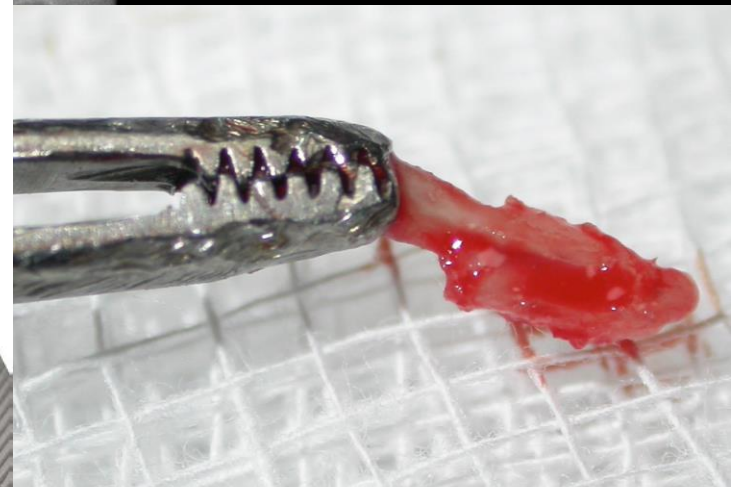
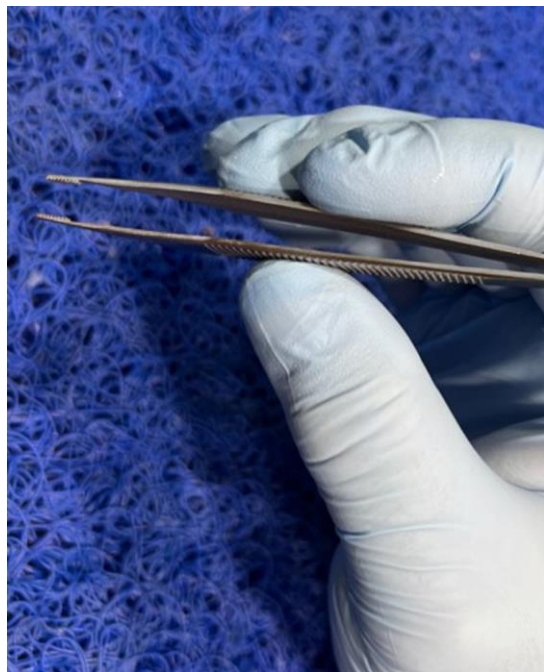
1.3 Grasping instruments

Pincet Manual Forceps to catch and retrieve small tooth or bone fragment with very delicate grasp.

Small size provides better control;

The beaks are delicate but resistant and require control and cautious use;

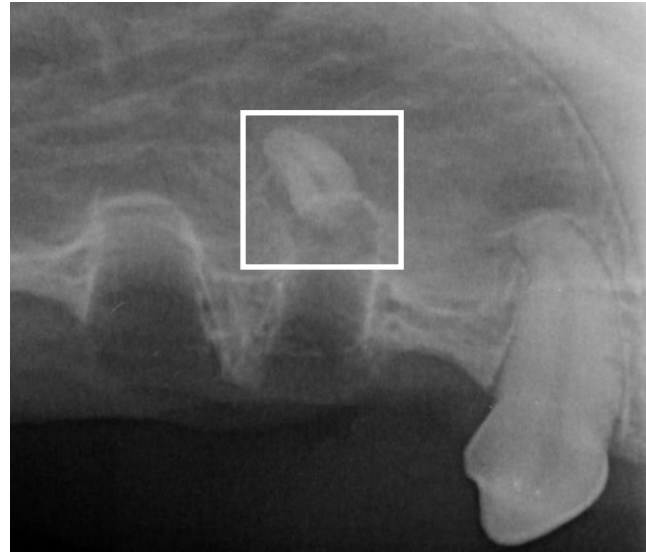
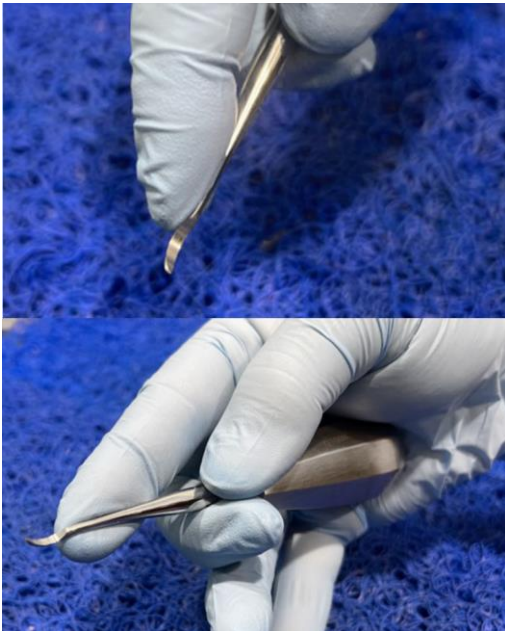
Use in oversized objects can damage them;



2.1 Elevating instruments

Root Tip Pick to elevate and retrieve small tooth or bone fragment at the alveolar socket or even partially intruded out of the socket.

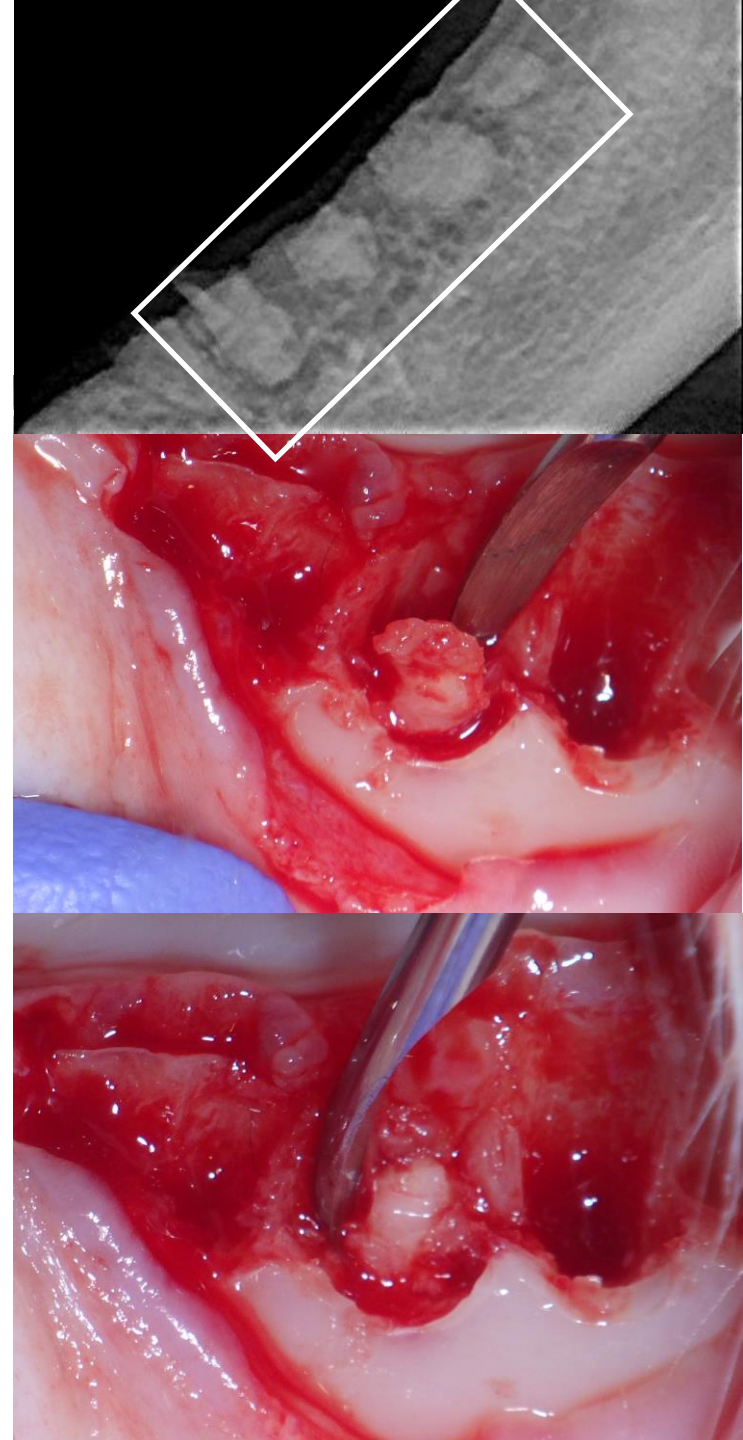
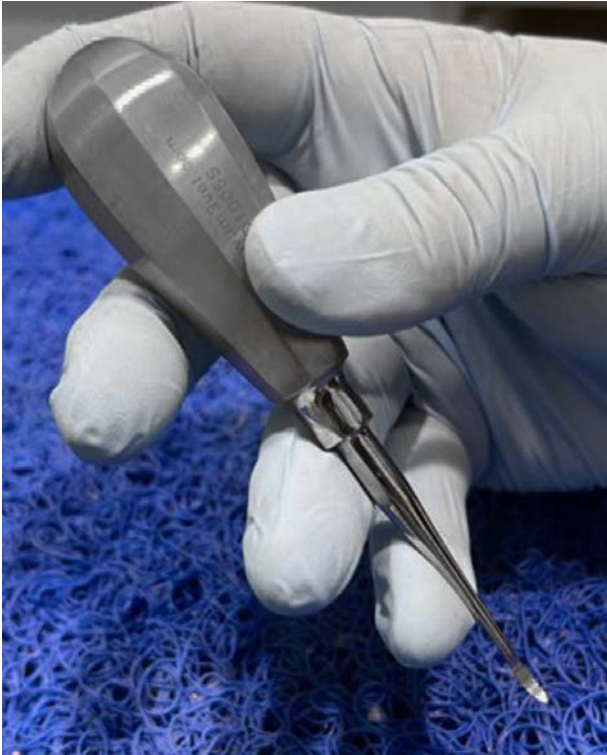
Use in oversized objects can damage them!



2.1 Elevating instruments

Root Tip Pick to elevate and retrieve small tooth or bone fragment at the alveolar socket or even partially intruded out of the socket.

Use in oversized objects can damage them!

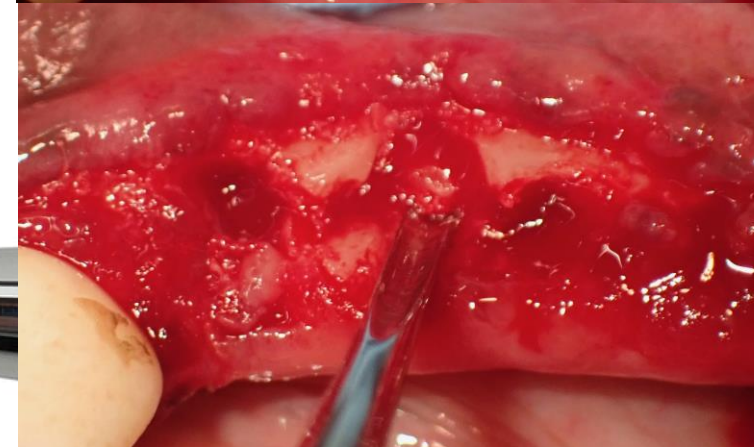
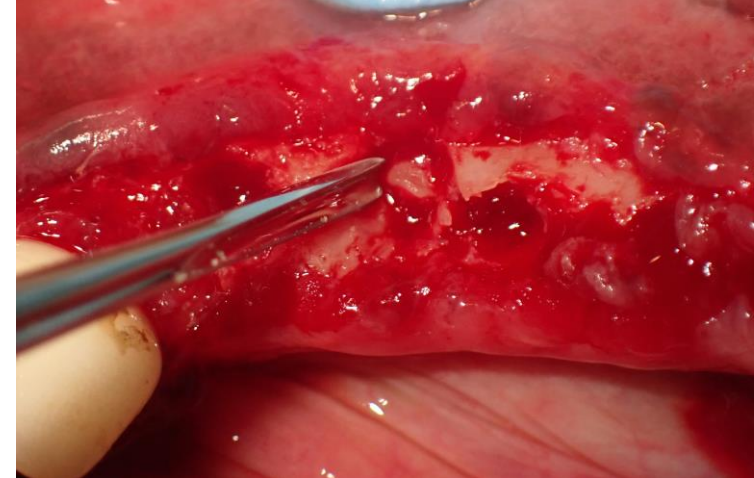
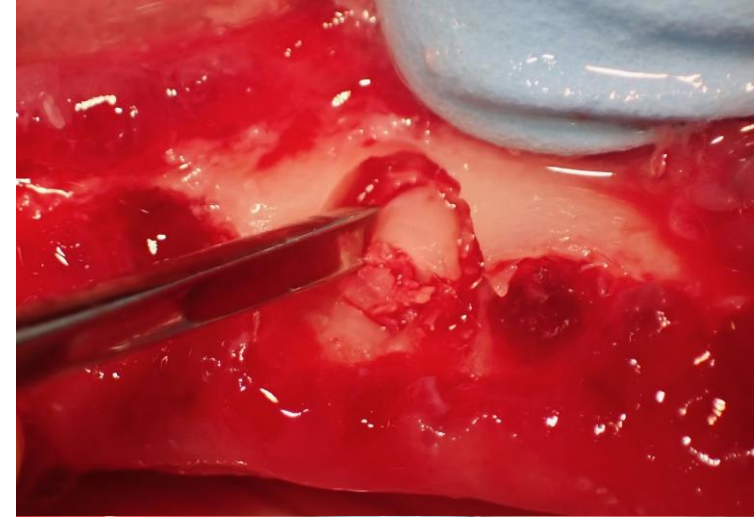
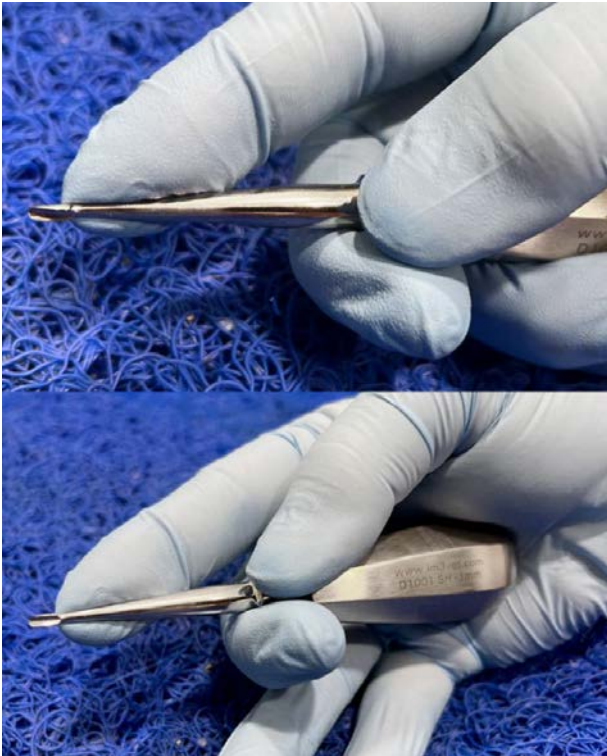


2.2 Elevating instruments

1 mm winged elevator to luxate/elevate tiny root fragments.

The working tip is fragile requires control and cautious use as well as sharpening.

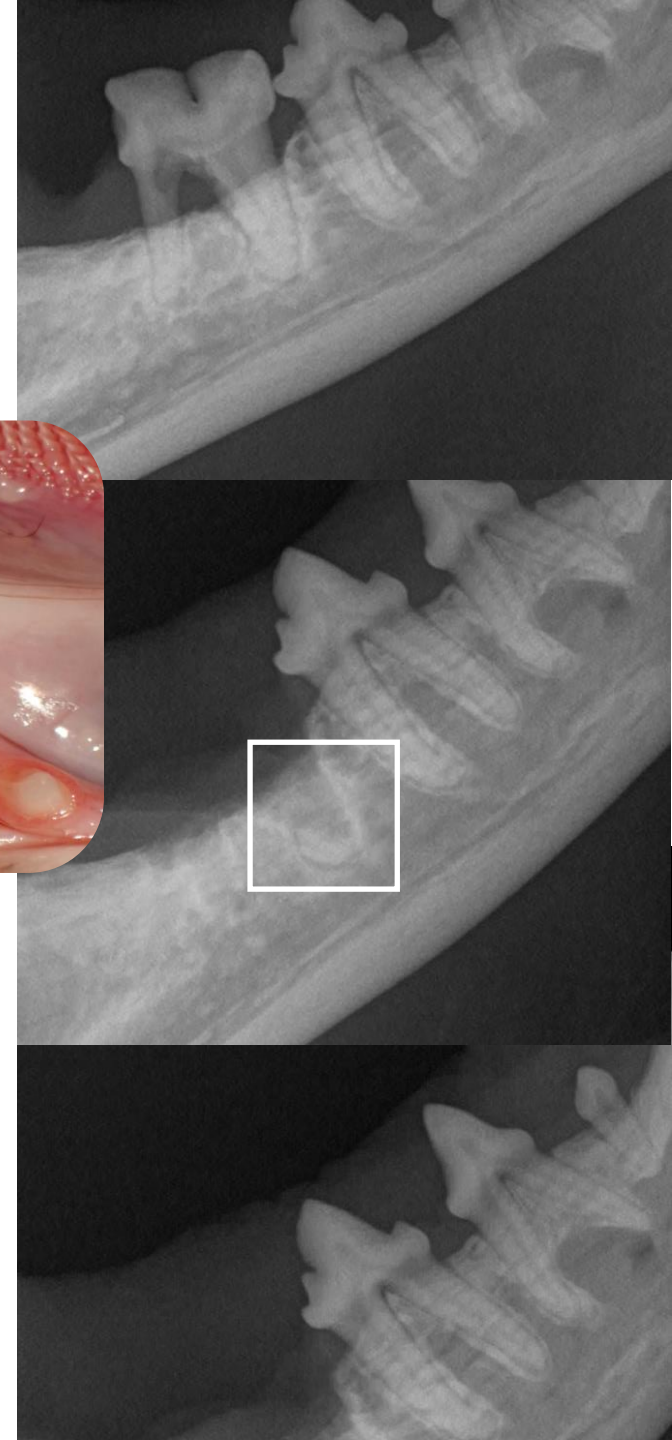
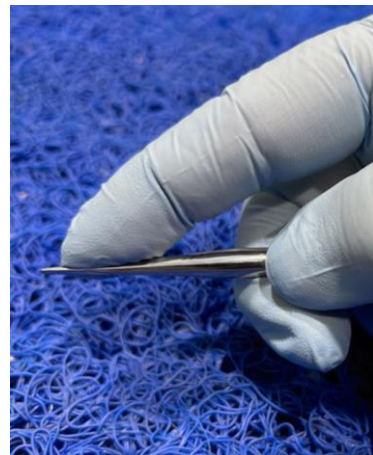
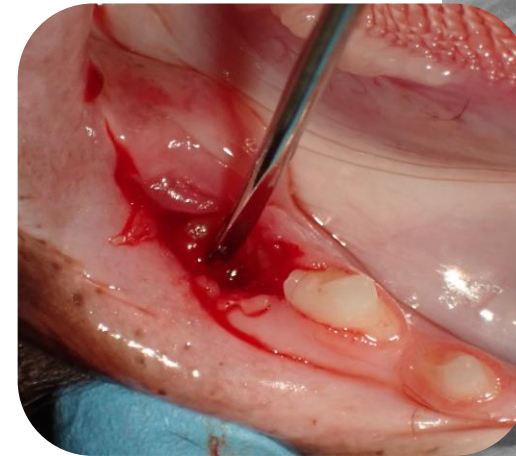
Strong elevation can damage them;



3.1 Luxating elevators

Straight Root Elevator to luxate/elevate tiny root fragments.

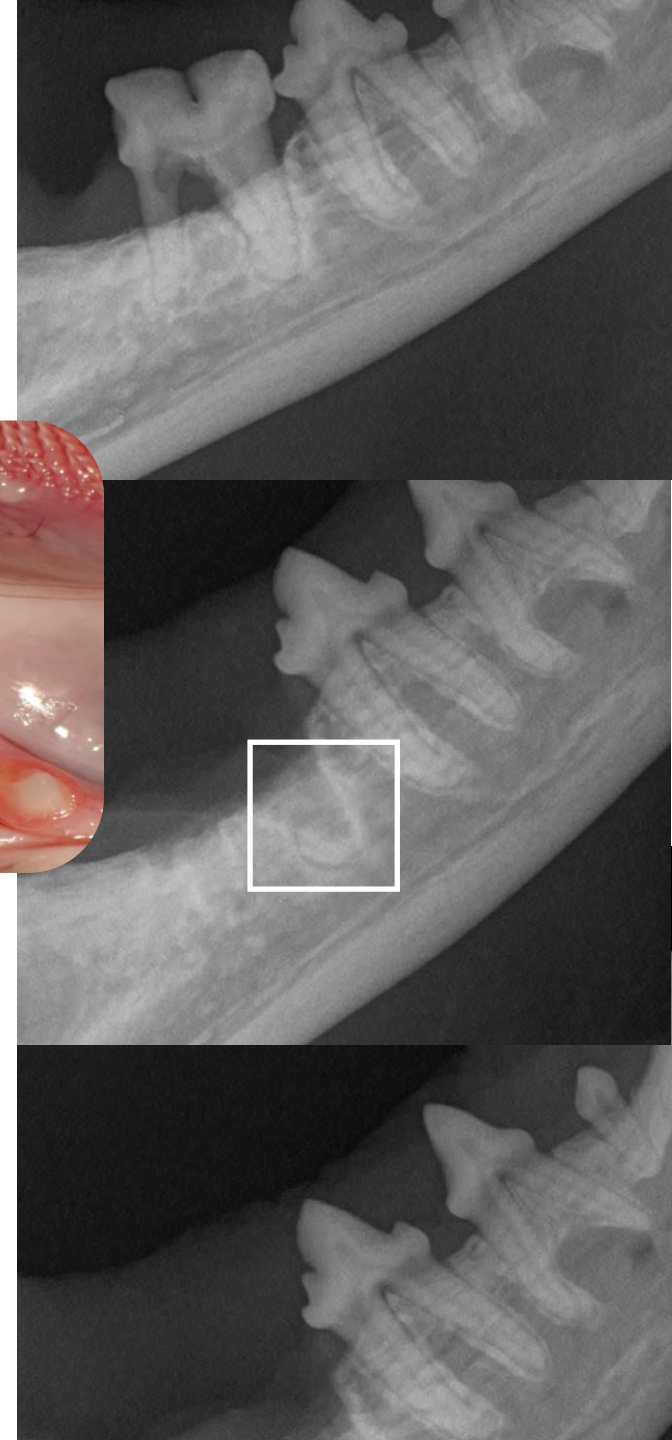
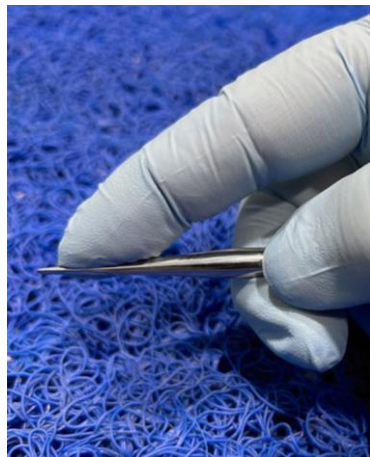
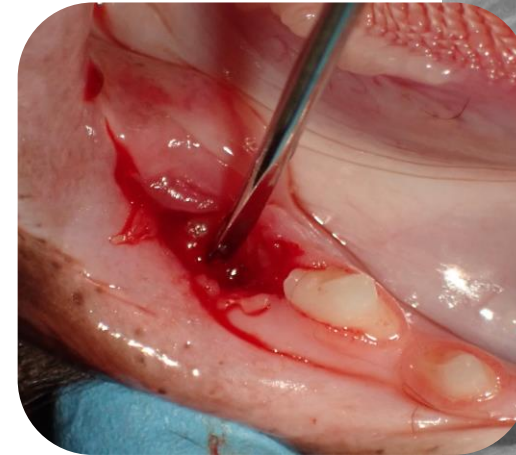
The working tip is fragile requires control and cautious use as well as sharpening. Strong elevation can damage them!



3.2 Luxating elevators

Straight Root Elevator to luxate/elevate tiny root fragments.

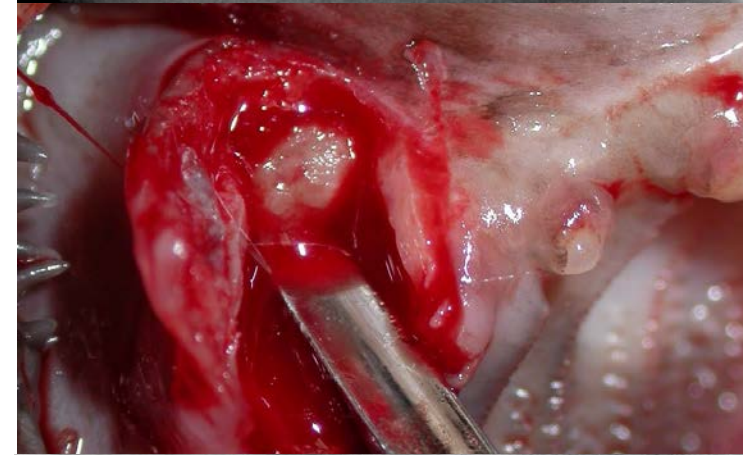
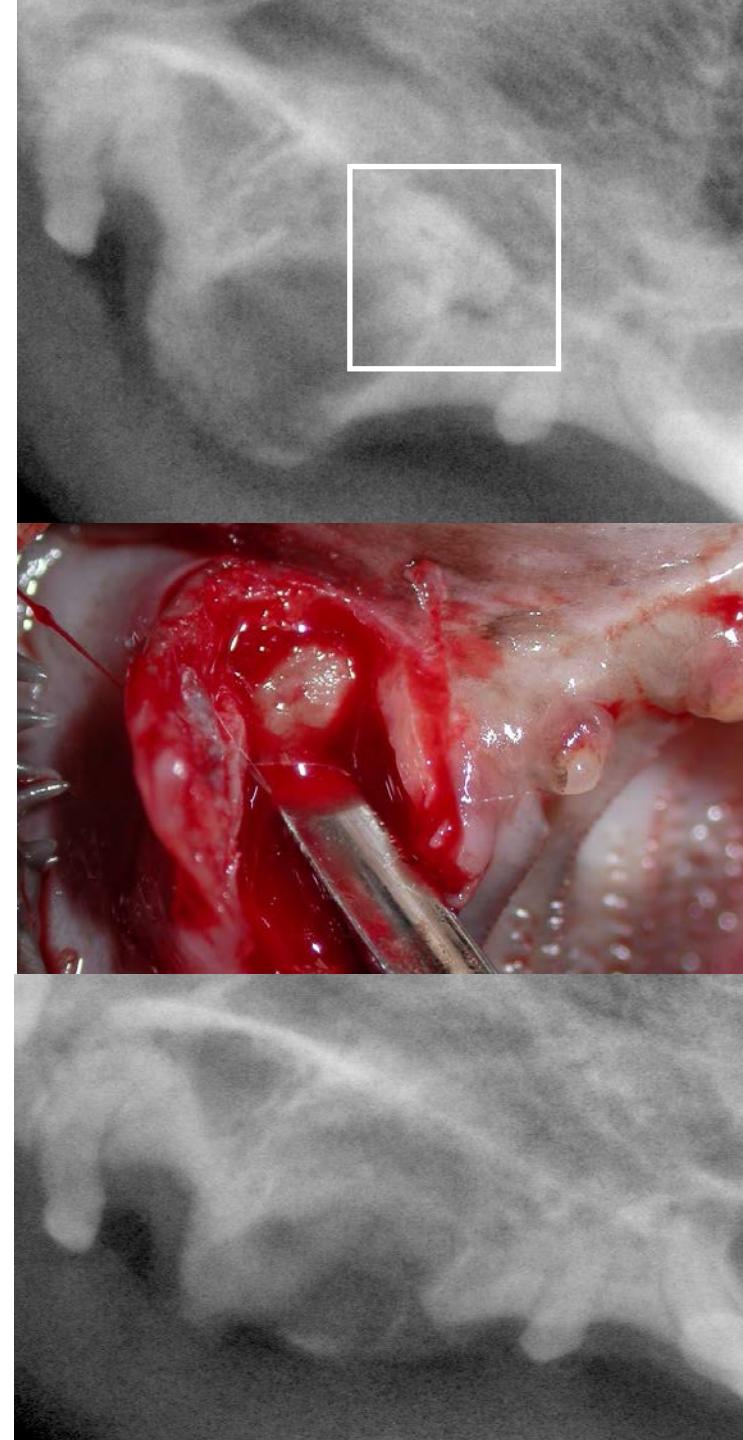
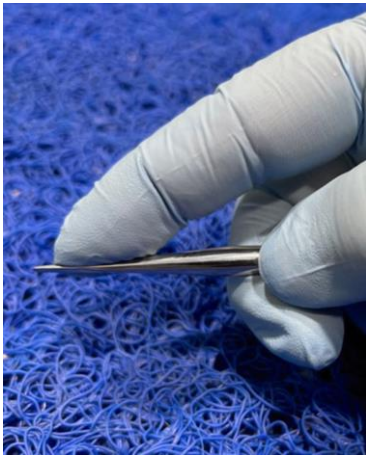
The working tip is fragile requires control and cautious use as well as sharpening. Strong elevation can damage them!



3.3 Luxating elevators

Straight Root Elevator to luxate/elevate tiny root fragments.

The working tip is fragile requires control and cautious use as well as sharpening. Strong elevation can damage them!



Recommended Burs

Standard burs - for cats and easily accessible in areas of problem.

Surgical length burs - wherever problem is deeply located, and visibility is compromised.

Extra surgical length - in extremely large dogs and/or deeply located areas of interest.

D8012 - Dental Bur - Xcut Fissure Taper 699 - 19mm FG

C7015 - Dental Bur - Xcut Fissure Taper 701L - 25mm FG (surgical length)

D7815 - Dental Bur - Xcut Fissure Taper 702L - 25mm FG (surgical length)

D7040 - Dental Bur - Diamond Round 4 - Med Grit - 19mm FG

D8379 - Dental Bur - Diamond Egg 379 023 - Med Grit - 19mm FG

D7971 - Dental Bur - Diamond Round End Taper 856L - Med Grit - 19mm FG

C9085 - Dental Bur - Round 2 - 25mm FG (surgical length)

C5600 - Dental Bur - Root Tip - 30 mm FG

Find out more at www.im3vet.com